

**PUBLIC NOTICE
STATEWIDE SPECIAL PRIMARY ELECTION
FOR PUBLIC SERVICE COMMISSION
JUNE 17, 2025**

Below are important dates for the Special Primary:

May 19, 2025 – Deadline to register to vote/Change of Address/Name

May 27, 2025 – First Day of Advance / Early Voting – 9:00-5:00

June 6, 2025 – Last day to request or mail out absentee ballot to elector.

June 13, 2025 – Last day of Advance / Early Voting – 9:00-5:00

We will be open 2 Saturdays during Advance / Early Voting:

May 31, 2025 – 9:00 to 5:00

June 7, 2025 – 9:00 to 5:00

All Advance / Early Voting for the Special Primary Election will be held in the Jefferson County Board of Elections Office, 415 Green Street, Louisville, Georgia.

On Election Day, all Polling Locations will be open from 7:00 a.m. to 7:00 p.m.

Susan Gray
Election Superintendent
Jefferson County, Georgia
478-625-8357

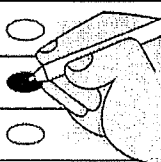
DEMOCRATIC BALLOT

OFFICIAL ABSENTEE / PROVISIONAL / EMERGENCY BALLOT

Jefferson County, Georgia

Precinct: 001-Louisville, 019-Louisville, 026-Louisville, 027-Louisville, 034-Louisville

Democratic Special Primary - June 17, 2025



To Vote:

1. Use Black or Blue Ink to mark the ballot.
2. Completely fill in the empty oval to the left of the candidate name or choice in all races you wish to vote.
3. If voting for a Write-In candidate, completely fill in the oval to the left of the Write-In selection, then write the name of the Write-In candidate in the space provided.

Warning

- Do **NOT** use red ink or felt tip pen to mark ballot.
- Do **NOT** circle, underline or mark through choices.
- Do **NOT** use check marks or X to mark ballot.
- Do **NOT** mark more choices per race than allowed.
- Do **NOT** sign, cut, tear or damage the ballot.

If you make a mistake or change your mind on a selection:

- A. Do not attempt to mark through the selection or attempt to erase. Write "Spoiled" across the ballot AND across the return envelope.
- B. Mail or return the spoiled ballot and envelope to your county board of registrars; a new official absentee ballot will be mailed to you.

If you decide to vote in-person: Surrender the ballot to the poll manager at an early voting site within your county or the precinct to which you are assigned. You will then be permitted to vote a regular ballot.

"I understand that the offer or acceptance of money or any other object of value to vote for any particular candidate, list of candidates, issue, or list of issues included in this election constitutes an act of voter fraud and is a felony under Georgia law." [O.C.G.A. 21-2-284(e), 21-2-285(h) and 21-2-383(a)]

Special Primary

For Public Service

Commission - District 2

For Term Ending December 31, 2030

(Vote for One)

☐ Alicia M. Johnson

For Public Service

Commission - District 3

For Term Ending December 31, 2026

(Vote for One)

☐ Daniel Blackman

☐ Peter Hubbard

☐ Robert Jones

☐ Keisha Sean Waites

SAMPLE BALLOT

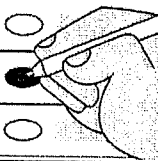
REPUBLICAN BALLOT

OFFICIAL ABSENTEE / PROVISIONAL / EMERGENCY BALLOT

Jefferson County, Georgia

Precinct: 001-Louisville, 019-Louisville, 026-Louisville, 027-Louisville, 034-Louisville

Republican Special Primary - June 17, 2025



To Vote:

1. Use Black or Blue Ink to mark the ballot.
2. Completely fill in the empty oval to the left of the candidate name or choice in all races you wish to vote.
3. If voting for a Write-In candidate, completely fill in the oval to the left of the Write-In selection, then write the name of the Write-In candidate in the space provided.

Warning

- Do **NOT** use red ink or felt tip pen to mark ballot.
- Do **NOT** circle, underline or mark through choices.
- Do **NOT** use check marks or X to mark ballot.
- Do **NOT** mark more choices per race than allowed.
- Do **NOT** sign, cut, tear or damage the ballot.

If you make a mistake or change your mind on a selection:

- A. Do not attempt to mark through the selection or attempt to erase. Write "**Spoiled**" across the ballot AND across the return envelope.
- B. Mail or return the spoiled ballot and envelope to your county board of registrars; a new official absentee ballot will be mailed to you.

If you decide to vote in-person: Surrender the ballot to the poll manager at an early voting site within your county or the precinct to which you are assigned. You will then be permitted to vote a regular ballot.

"I understand that the offer or acceptance of money or any other object of value to vote for any particular candidate, list of candidates, issue, or list of issues included in this election constitutes an act of voter fraud and is a felony under Georgia law." [O.C.G.A. 21-2-284(e), 21-2-285(h) and 21-2-383(a)]

Special Primary

For Public Service Commission - District 2

For Term Ending December 31, 2030
(Vote for One)

☐ Tim Echols
(Incumbent)

☐ Lee Muns

For Public Service Commission - District 3

For Term Ending December 31, 2026
(Vote for One)

☐ Fitz Johnson
(Incumbent)

SAMPLE BALLOT